

## II

## Trombone I

Andante sostenuto e misterioso ♩ = 46

3 6

11 19 20 4

24 21 3 3

32 22 4

39 23 24 25 2

51 26 ♩=56 ♩=52

*sf* *f* *sf*

56 poco allarg. --- al 27 Tempo I ♩=46

59 *ff* *p*

63 28 *f* *f*

67 *ff* *ff*

70 29 8

80 30 31 8

## Trombone I

## III

Allegro con brio, ma non troppo mosso ♩ = 110

13 32 17 33 15

46 34 15 35 ♩=120 18 36 14

93 37 2 7

106 38 *mp* 39 poco meno 5

138 40 *Meno mosso* ♩=70 *A tempo* ♩=110 *Meno mosso* ♩=70

146 3 *A tempo* ♩=110 *Meno mosso* ♩=70 3

155 *A tempo* ♩=110 *Meno mosso* ♩=70 3 *A tempo* ♩=110

162 41 *Meno mosso* ♩=70 12 *f*

178 42 *A tempo* ♩=110 5 3

188 3

195 43 *Meno mosso, rubato* ♩=80 2

*f f*

## Trombone I

2

201 **Tempo primo** ♩=110

208 **Meno mosso** ♩=80 **Tempo primo** ♩=110

226

232

238 **45**

256 **46**

275 **47** **Meno mosso** ♩=85 **48** **Ben moderato** ♩=70

esitando, poco accel. al Tempo I

e - si - tan - do **49** **50** **animato** ♩=110 **poco a poco acceler.**

309 **51** **con fuoco** ♩=120

320 ♩=125

## Trombone I

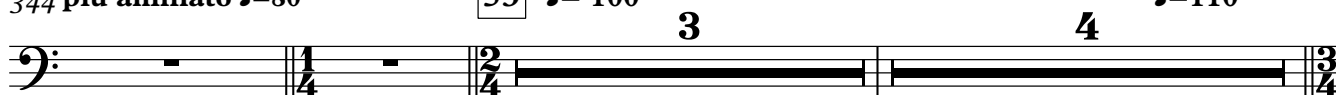
3

329

[52] **Meno mosso** ♩=70335 **poco acceler.****poco allarg. a tempo** ♩=70344 **piu animato** ♩=80

[53] ♩=100

♩=110



353



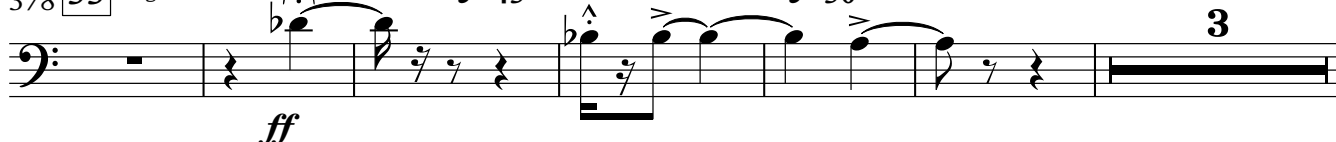
[54]



371

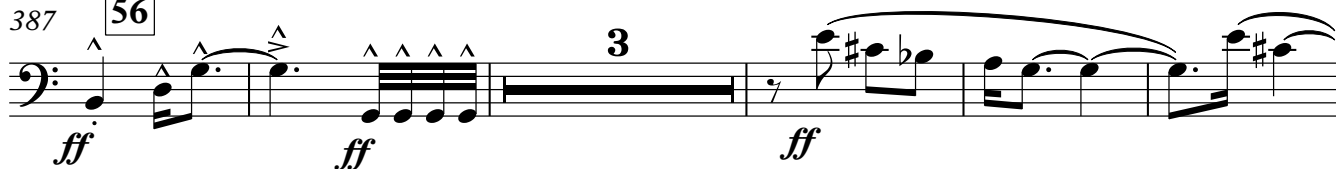
**sub.meno mosso** ♩=75 **poco a poco allarg.**378 [55] **molto meno mosso**  
**largamente** ♩=50**In 4** ♩=45**In 2**

♩=50



387

[56]



395

[57]

**In 4** ♩=40403 **molto. allarg.**